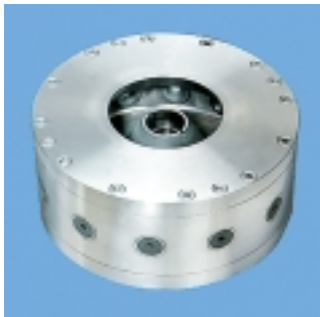
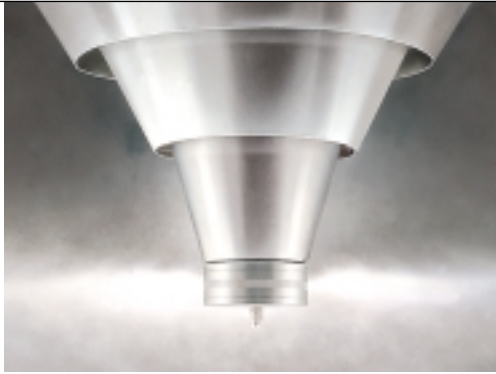


Rotary Atomizer Type F600/F800/F1000



for atomization of fluid feeds
in spray drying and in spray
dryer absorption plants.

- Epicyclic gear drive
- Heavy duty design
- Patented atomizer wheels



Rotary Atomizer Type F600/F800/F1000

The atomizer drive

The atomizer drive consists of two parts. The upper part comprises the gear box, motor, and its support. The motor is a 2-pole, vertical flange type, the power being transmitted from the motor to the vertical gear box input shaft through a toothed coupling. The lower part of the atomizer comprises the support for the spindle bearings, feed pipe and cooling air assembly, and conical protective skirt. The spindle is supported in special high speed, single row, radial ball bearings. The drive is designed according to the flexible spindle concept so that irregularities in feed rate and other imbalance sources in the atomizer wheel is compensated without spindle and bearing damage.

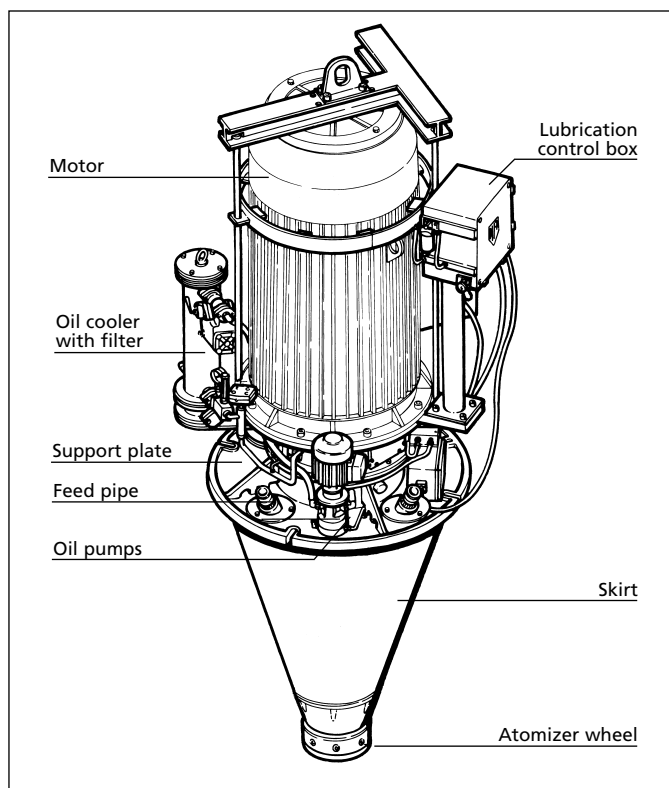
The atomizer monitoring system comprises:

- Low oil pressure alarm.
- High and low oil level alarm.
- High oil temperature alarm.
- Flooding alarm protecting against feed leakage
- Spindle vibration alarm protecting against excessive vibration conditions.
- Tachometer to register variable spindle speed when adjusted by control of a frequency converter.
- Monitoring equipment for atomizer load and operating time

The atomizer wheel

Both F600, F800 and F1000 atomizers all operate with insert type wheels of 320 mm or 350 mm diameter. Selection depends upon the operating specifications. 320 mm and 350 mm diameter wheels are available with a number of inserts up to 24.

The main body of the atomizer wheel is made of corrosion resistant material, whereas the wear parts, such as the conical inserts and parts of the bottom plate and the upper plate, are made of advanced ceramic material.



Specification

Wheel speed range:	F600:	5.800 – 8.800 rpm
	F800:	8.800 – 11.500 rpm
	F1000:	8.800 – 11.500 rpm
Feed rate:	F600	max. 150 t/h
	F800	max. 105 t/h
	F1000	max. 135 t/h
Feed pipe:	2 1/2" BSP (one or two)	
Cooling air pipe:	3" BSP	
Weight:	1700 kg (exclusive of motor)	
Nominal power consumption:	F600	max. 630 kW
	F800	max. 800 kW
	F1000	max. 1000 kW
Gear box type:	epicyclic	