



# ARIETE

## NS3024Energy

The Ariete Energy Series high pressure homogeniser/pump features the latest in design concept, contributing to excellence in performance and reliability.

### Liquid end

- High quality stainless steel and special high wear resistance materials for best mechanical and corrosion resistance performances
- 3A and electropolished versions available
- Ball (PVB) and poppet valves (PVP) interchangeable into the same block design for maximum product handling flexibility
- Aseptic version compression block available with sterile condensate packing flushing
- Various materials for pumping plungers

### Homogenising valve

- One stage (standard on homogenizers) with pneumatic adjustment from the machine's control panel
- High efficiency design valve NanoValve<sup>®</sup>, based on advanced fluid dynamics concepts, available as option
- Engineered for easy maintenance and cleaning
- Second stage option

### Power end

- Heavy duty and reliable power frame
- AC motor drive
- Forced lubrication with gear pump and low oil pressure switch
- "V" belts drive train and gearbox speed reduction unit

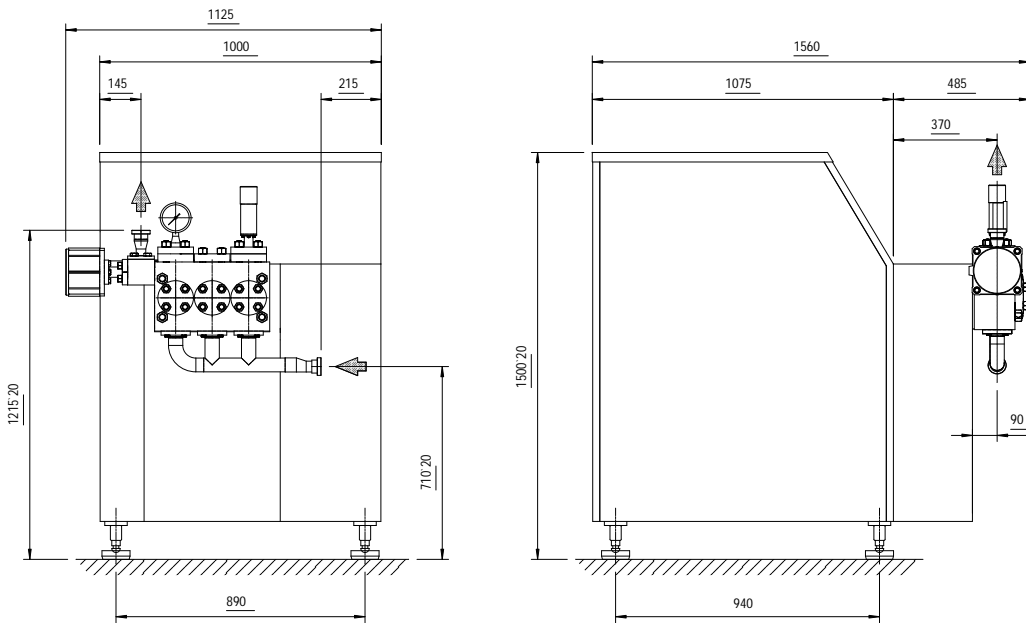
### Casing

- Made in polished stainless steel with sound proof lining
- Easy access and maintenance with removable panels

### Tools and spares parts

- Special tools and one set of emergency spares parts supplied with the machine
- O&M manual and Spare Parts List on CD-ROM

- Designed according to the EU safety rules (CE standards), engineered, manufactured and tested according to ISO EN 9001 Quality System
- Sanitary and aseptic execution, designed for CIP and SIP
- Suitable for abrasive and viscous products
- Homogenizing pressure up to 1500 bar
- Monoblock compression head design up to 600 bar pressure
- Multi block VHP compression head design for operation over 600 bar, to avoid stress concentration and block failure
- Easy implementation in remote control systems and complete process lines



\*measure in mm

## Performances

	100 bar	150 bar	200 bar	250 bar	400 bar	600 bar	1000 bar	1200 bar	1500 bar
Max Flow Rate (l/h)	7200	4800	3500	2700	1500	1000	550	310	300

## Design Features and Materials

- Compression head ——— - special high grade duplex / super-duplex SS alloy  
- MONOBLOCK or Multi-Block VHP construction
- Pump Valves ——— - high wear resistant Stellite® alloy removable seats  
- ball type (PVB) or poppet type (PVP) in solid Stellite®
- Pistons ——— - Chrome coated stainless steel  
- Tungsten carbide coated stainless steel  
- Solid ceramic
- Homogenizing Valve ——— - Pneumatic actuated  
- wear parts made of Tungsten Carbide, Ceramics as option  
- high efficiency NanoValve® available as option
- Pressure Gauge ——— - sanitary design analog high pressure gauge
- Product line connections ——— - DIN 11851, Tri-Clamp®  
- others as option upon request
- Power end ——— - rugged cast iron power frame  
- forced lubrication with low oil pressure switch  
- polished SS machine casing on painted steel frame
- Main options ——— - high pressure pump version  
- 2<sup>nd</sup> stage homogenizing valve  
- electric power board for fixed or variable capacity

## Technical Data

Number of plungers .....	3
Stroke.....	70 mm
Absorbed motor power up to.....	24 kW
Weight .....	1300 kg
Water consumption.....	90 l/h
Lubricating oil ISO VG 150.....	20 l
Gearbox oil EP 220 .....	10,5 l